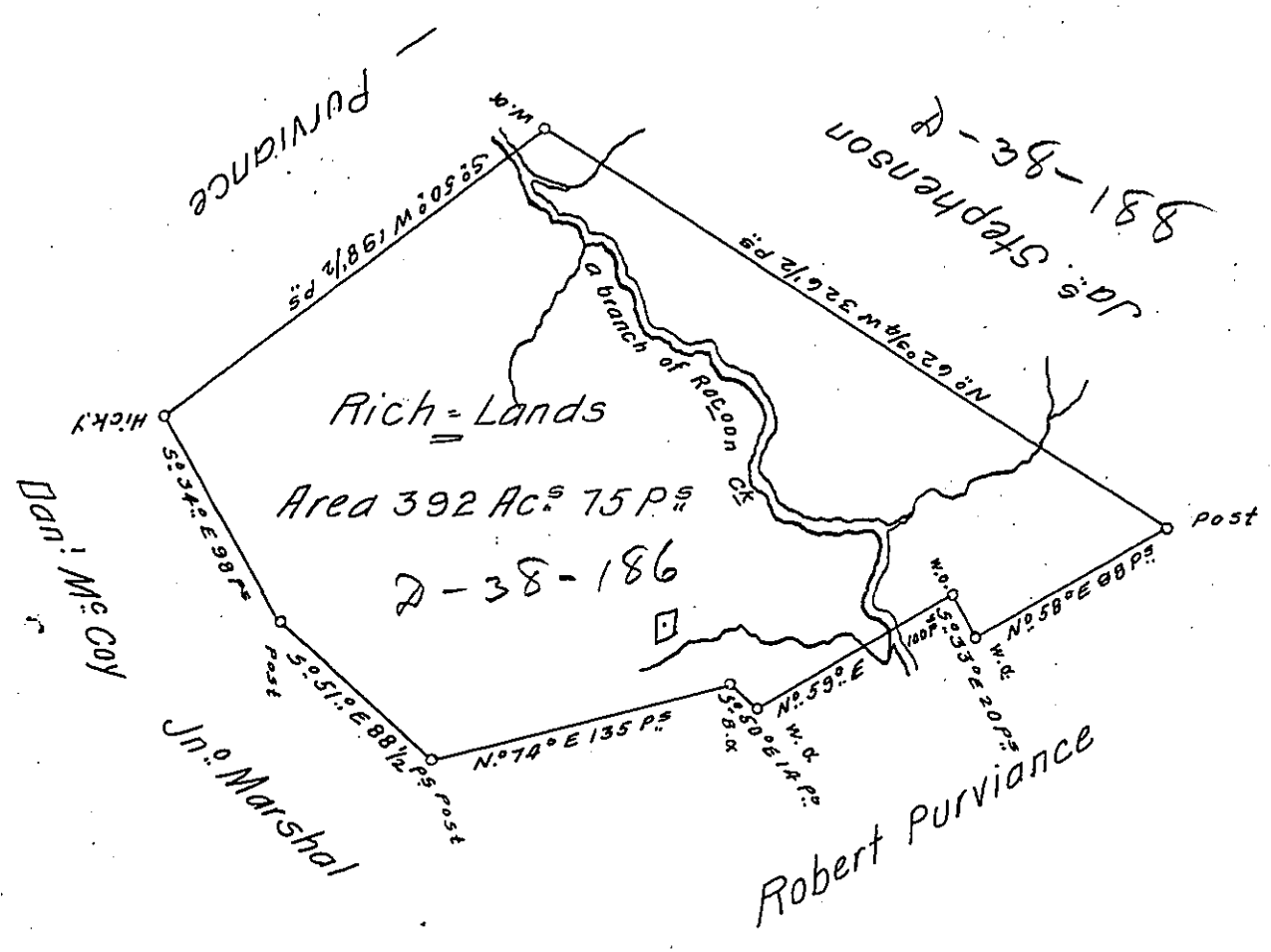


An Improvement



A Draught of a Survey called "Rich Land" situate on a Branch of Racoon Ck. in Washington County contain^g 392 Ac. 75 P. strict Measure executed Sept^r y^e 8th 1786 in Consequence of a Certif^l for 400 Ac. granted to James Stephenson by the Commiss^{rs} appointed by Virginia to adjust the Claims to unpatented Lands in the Counties Monong^a Yohg^a & Ohio and duly entered with the County Surv^r as appears from the List of Entries transmitted from the Surv^r Gen^{ls} Office.

Jn^o Lukens Esq^r S. Gen^l }
 Presley Nevill } D. S.
 Matt^w Ritchie }

IN TESTIMONY that the above is a copy of the original remaining on file in the Department of Internal Affairs of Pennsylvania, made conformably to an Act of Assembly approved the 16th day of February, 1833, I have hereunto set my Hand and caused the Seal of said Department to be affixed at Harrisburg, this seventh day of April 1908.

Henry Howell
 Secretary of Internal Affairs.